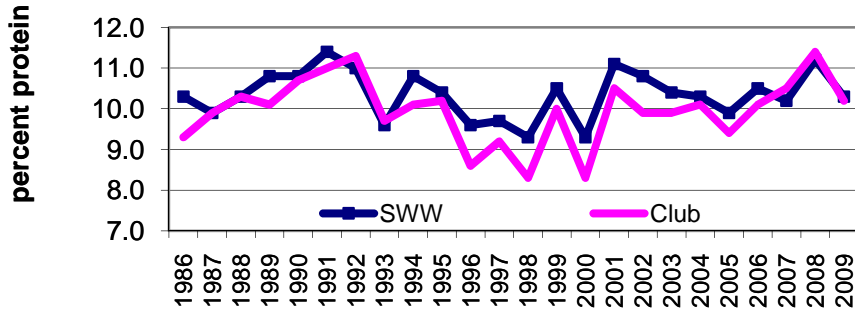
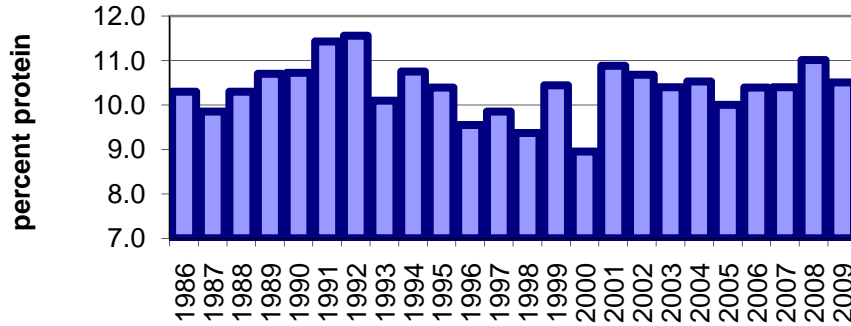


PNW SWW & Club Wheat Protein 12% Moisture Basis



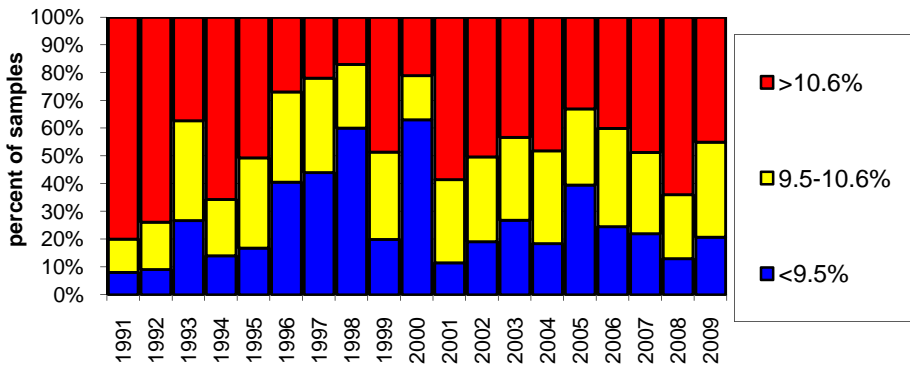
Source: U.S. Wheat Crop Quality Report
--Washington Grain Commission--

Washington SWW Protein 12% Moisture Basis



Source: U.S. Wheat Crop Quality Report

Washington Soft White Wheat Protein Percent of Samples by Protein Range



Source: WGC Protein Survey, 10/09 --Washington Grain Commission--